



# New Way of Working

Providing Support  
in your  
Community

March 29<sup>th</sup>, 2025



# Overview



## Topic: New Way of Working – Providing Support in your Community

Presenters:

### **Tricia Murray**

Director of Regional Hubs, Disability Support Program (DSP), Department of Opportunities and Social Development

### **Rose Deveaux**

Middleton, Western Region

### **Kim Long**

Membertou, Eastern Region



The goal of this presentation will be to provide an update on the transition to Regional Hubs and new DSP support roles and how DSP will work differently.

# New Way of Working



**The philosophy behind the Remedy will continue to guide our actions.**

- All new staff have been **trained on a Human Rights-based approach to support.**

Quotes staff collected through training that speak to people having **Choice and Control**:

**“Work at the speed of trust”**

**“Sew the seed and get out of the way”**

**“All outcomes belong to the person.”**

**“One size fits one”**

The goal is for everyone – within the disability sector and beyond – to embrace that **persons with disabilities have choice and control over their lives.**

# New Way of Working



## Making sure support is built around the person, not the system.

- The new way of working means taking the time to getting to know people really well and understanding what their vision for their future is.

Quotes from training that speak to working **Alongside People to Create a Vision**:

**“What ‘s strong – not what’s wrong.”**

**“Our communities are better with the involvement and contributions of people with disabilities.”**

**“You cannot know what someone needs until you know what they have.”**

**“All people need people”**



The new Regional Hubs and support roles will continue to reinforce this by **focusing on what matters to each person they support.**

# Regional Hubs



## What is a Regional Hub?

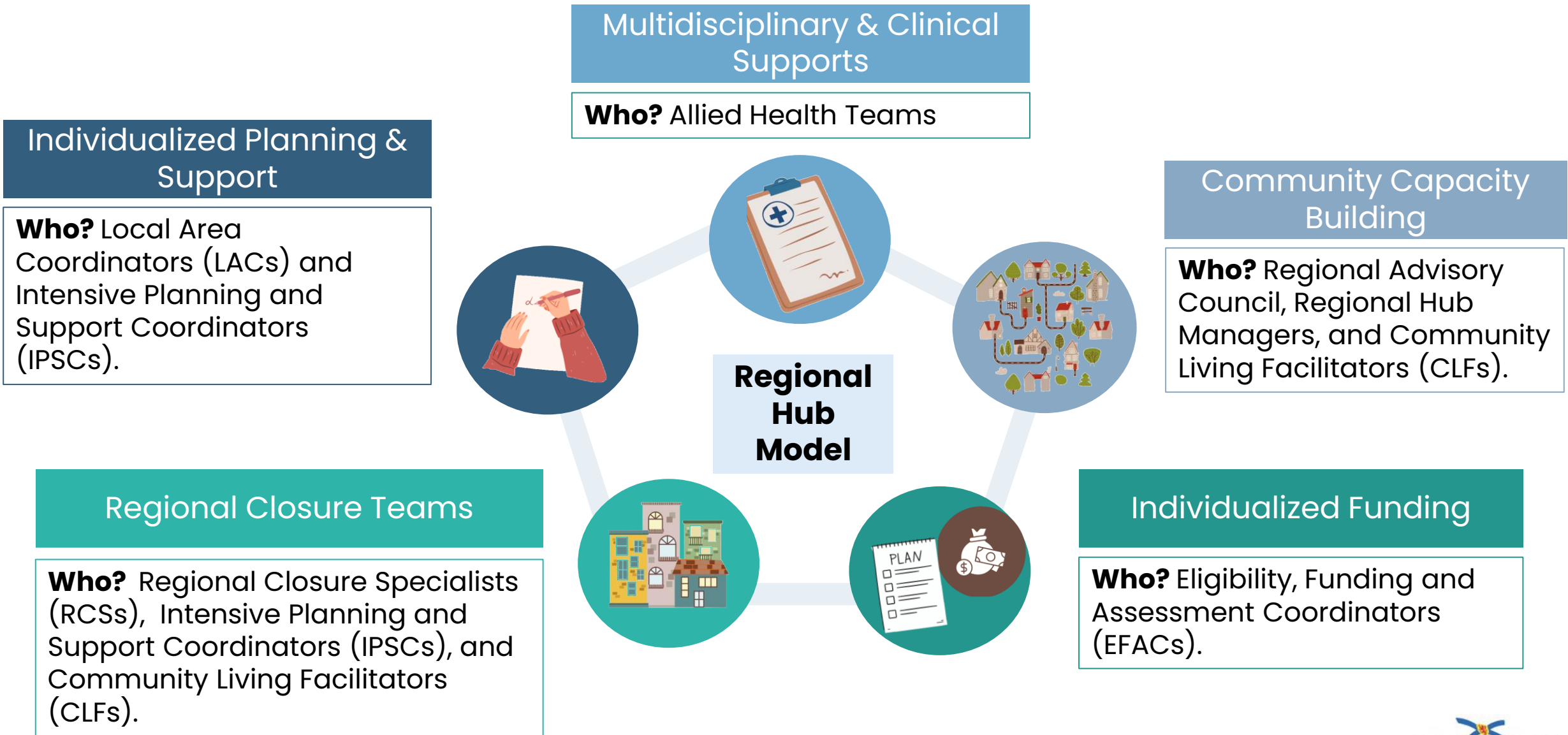
- A **team of people working in an area of the province** to support people with disabilities – **not a physical space.**
- Each Hub will have **support roles that work alongside individuals with disabilities, their families and communities.**

### The Regional Hub Model will:

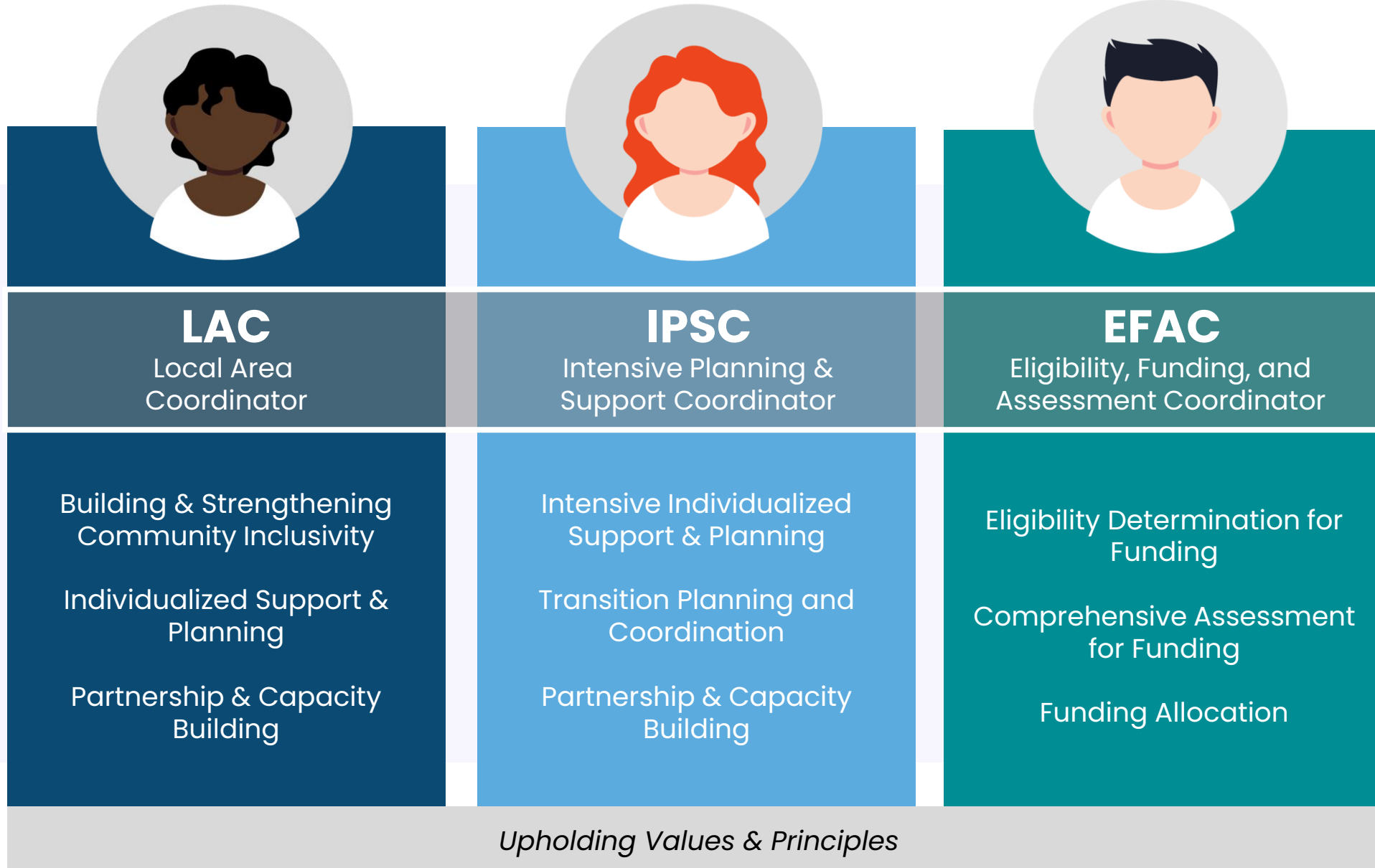
- **prioritize a person-centred approach**, improving support options (both natural and formal) for individuals with disabilities.
- better support individuals by **helping them connect to local community supports.**



# Regional Hub Functions & Positions Providing Support



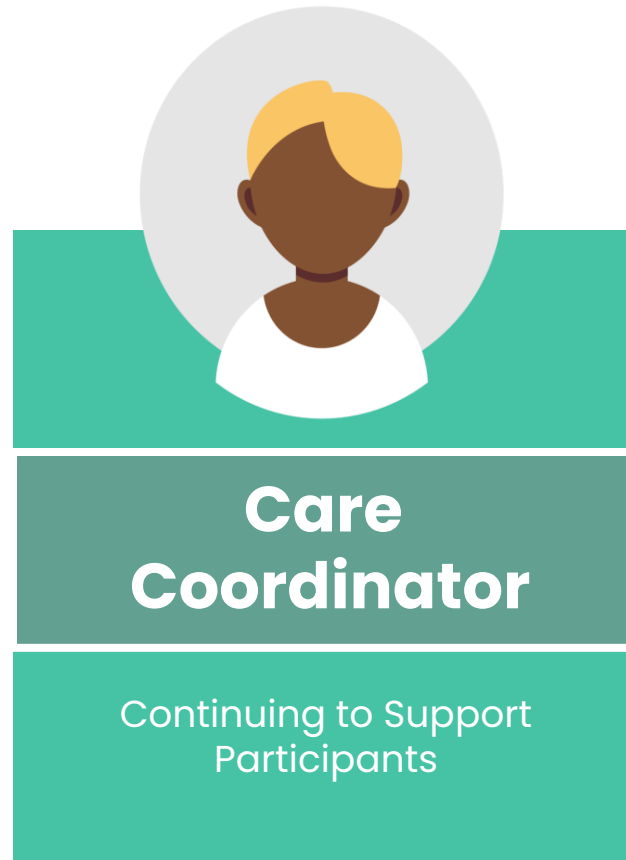
# New Support Roles



# Care Coordinator Role



Existing Care Coordinators will continue to be a part of the lives of program participants up until they have received their funding allocation for the future state.



**“We are not  
doing it better  
we are just  
doing it  
differently.”**



# What's to come?



**The Regional Hubs are just getting started.**



**We are excited to work with all of you as we continue to grow.**